



**BENCHMARK**  
CONSULTING ENGINEERS

## | TABLE OF CONTENTS

|                            |       |
|----------------------------|-------|
| <b>DIRECTOR'S MESSAGE</b>  | 3     |
| <b>ABOUT US</b>            | 4     |
| <b>CERTIFICATIONS</b>      | 5     |
| <b>OUR EXPERTISE</b>       | 7     |
| <b>OUR RESOURCES</b>       | 8-9   |
| <b>COMPANY EXPERIENCES</b> |       |
| INFRASTRUCTURES            | 10-24 |
| STRUCTURES                 | 25-37 |
| SUSTAINABLE PROJECTS       | 38-43 |
| TELECOMMUNICATIONS         | 44-46 |
| <b>TEAM BUILDING</b>       | 47    |
| <b>CONTACT US</b>          | 48    |

## | DIRECTOR'S MESSAGE

It is with great pride and sincere appreciation that I present our company profile—a reflection of our journey, our values, and our unwavering commitment to excellence.

Since our founding, we have remained steadfast in our dedication to delivering quality, innovation, and reliability across every project and partnership. Our team stands at the heart of our success—their expertise, integrity, and passion continue to drive our mission forward and define who we are.

At Benchmark Consulting Engineers Ltd, we believe in building long-term relationships founded on trust, professionalism, transparency, and mutual growth. These principles guide every decision we make and every service we provide.

Looking ahead, we are optimistic about the future. We remain focused on continuous improvement, embracing new challenges, and creating sustainable value for our clients, partners, and communities.

I invite you to explore our story and discover how we can collaborate to achieve impactful, lasting results.

Thank you for your trust and interest in our company.

Warm regards,  
Nandish Mahadeb  
Director

**BENCHMARK**  
CONSULTING ENGINEERS



## | ABOUT US

Benchmark Consulting Engineers Ltd, based in Quatre Bornes, Mauritius, is one of the leading civil and structural engineering consultancies in the country. Established in 2010, the firm offers a wide range of professional services including project management, structural and civil design, telecommunication infrastructure, environmental assessments, and the rehabilitation of existing buildings.

Backed by a multidisciplinary team of skilled professionals, Benchmark is committed to delivering high-quality, sustainable, and client-focused engineering solutions. The firm places strong emphasis on innovation and leverages advanced technologies such as CAD and structural analysis software to ensure precision and efficiency in every project.

Over the years, Benchmark has successfully contributed to numerous public and private sector developments across Mauritius and the region. Recognised for its reliability, technical excellence, and proactive approach, the company continues to support the growth of resilient infrastructure and remains a trusted partner in the construction and engineering industry.

**OUR VISION** is to be a leading engineering consultancy in Mauritius and the region, and to grow as a recognised international company known for delivering innovative, sustainable, and high-quality engineering solutions that shape resilient infrastructure and enhance communities.

**OUR MISSION** is to provide professional, efficient, and cost-effective civil and structural engineering services by leveraging technical expertise, modern technologies, and a commitment to excellence. We aim to build long-term client relationships through integrity, innovation, and consistent performance across every project we undertake.

## | CERTIFICATIONS

At Benchmark Consulting Engineers, we uphold the highest standards of professionalism, technical excellence, and quality assurance. Our certifications reflect our commitment to delivering reliable, compliant, and client-focused engineering solutions.



### CIA REGISTRATION

Benchmark is a registered consultancy firm with the Construction Industry Development Board (CIDB) Mauritius, affirming our compliance with national construction regulations and professional standards. This registration enables us to operate legally and competitively within the construction and engineering sector.



### ISO 9001:2015 CERTIFICATION

Benchmark has also initiated the process for ISO 9001:2015 certification, aiming to formalise and strengthen our existing Quality Management System (QMS). This commitment reflects our dedication to delivering engineering services through structured procedures that promote efficiency, client satisfaction, and continuous improvement. While certification is in progress, we already adhere to quality-driven practices that ensure our work remains consistent, transparent, and aligned with international standards.

## | OUR EXPERTISE



### PROJECT MANAGEMENT

- Feasibility studies
- Project planning and scheduling
- Cost estimation and control
- Risk assessment and management
- Contract administration
- Stakeholder coordination
- Concept Design
- Quantity surveying



### DESIGN OF STRUCTURES

- Structural analysis and design
- Road and highway design
- Drainage and stormwater design
- Coastal and marine structures design
- Water supply and sewerage systems
- Geotechnical investigations and foundation design
- 3D modeling and BIM services



### CONSTRUCTION SUPERVISION AND MANAGEMENT

- Site inspections and quality control
- Progress monitoring and reporting
- Health and safety supervision
- As-built documentation
- Supervision of materials testing and compliance with technical specifications
- Monitoring of contractor resources and productivity
- Supervision of commissioning and performance testing



### ENVIRONMENTAL REPORTS

- Environmental Impact Assessments (EIA)
- Environmental Management Plans (EMP)
- Climate resilience assessments
- sustainability reports
- Hydrological and flood risk studies
- Waste management planning



### TENDER DOCUMENTATION

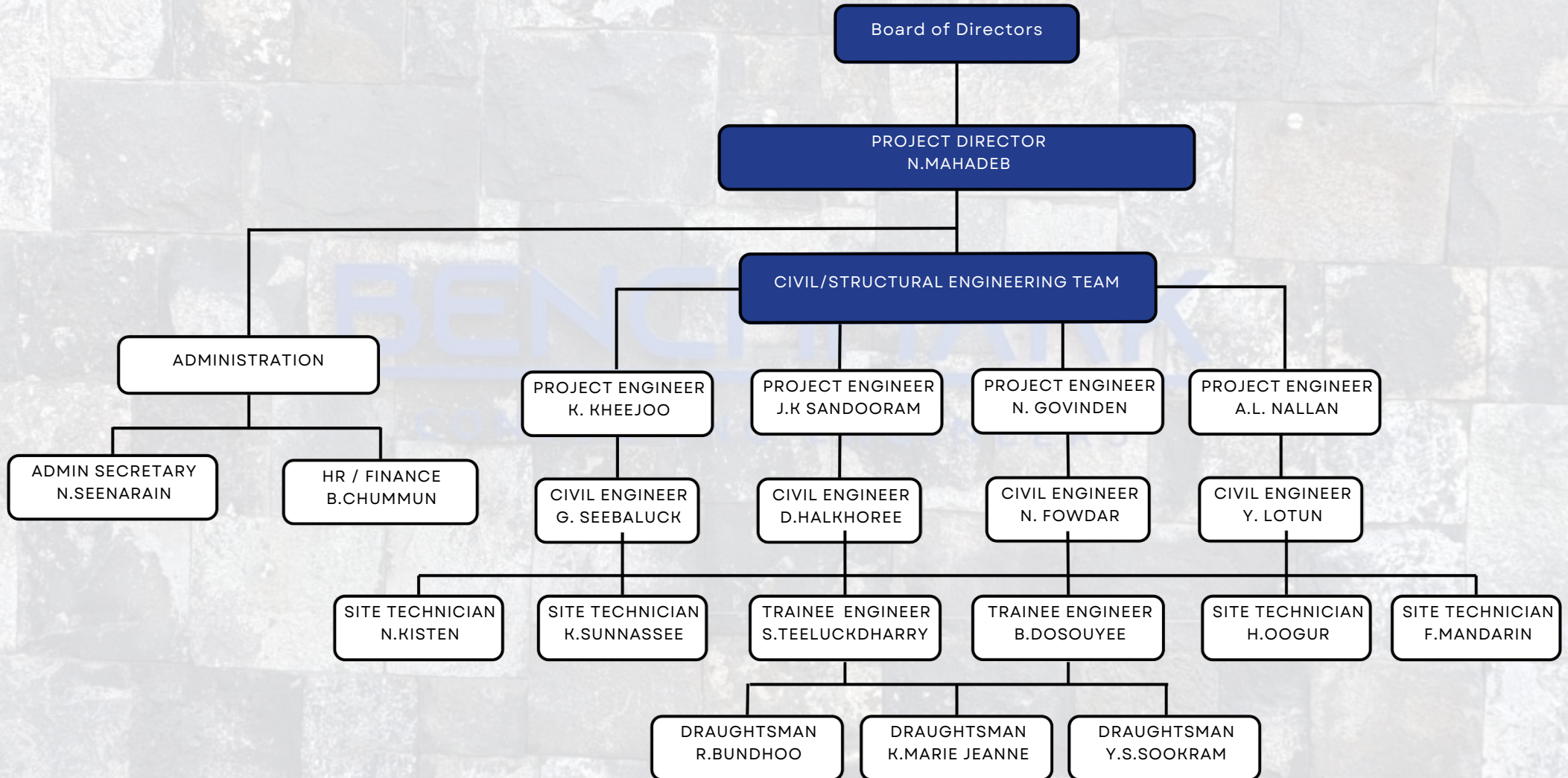
- Drafting of tender documents
- Preparation of Bills of Quantities (BoQ)
- Technical specifications
- Scope of works
- Drawings and design details for tenders
- Bid evaluation report

### ADDITIONAL SERVICES

- Land and topographic surveys
- GIS and mapping
- Traffic impact assessments
- Infrastructure maintenance planning
- Value engineering and lifecycle cost analysis

## | OUR RESOURCES

Our firm is a dynamic engineering company committed to delivering innovative and reliable solutions across various sectors. We pride ourselves on a structured team approach, ensuring that every stage of our projects from planning and design to execution and supervision is handled with technical accuracy, efficiency, and a strong commitment to quality.



### TECHNICAL EQUIPMENT

We are equipped with state-of-the-art tools to support both design and fieldwork, including:

- GPS Systems, Drone and Total Stations for precise surveying
- Coating & metal thickness gauge, allowing for precise assessment of material conditions during structural inspections and quality control processes
- Multifunctional Rebar Detectors and Schmidt Hammers for structural assessment
- A1 Plotter for large-format design document production
- We operate an in-house server to ensure secure data management, efficient project collaboration, and reliable storage of all technical documentation.
- Company Vehicles ensuring efficient mobility for site visits and project supervision

### ENGINEERING & DESIGN SOFTWARE

Our firm leverages a comprehensive suite of advanced software to support planning, design, analysis, and documentation processes:

- AutoCAD, Civil 3D, and Revit for architectural and structural modeling
- Prota-Structure, Autodesk Robot, and Prokon for structural analysis and design
- GEOHEC-RAS, GEOHEC-HMS, WaterCAD, and ArcGIS for hydrological and infrastructure modeling
- STAAD.Pro for comprehensive structural analysis
- Microsoft Office Suite for project management and reporting

# INFRASTRUCTURE

## **INFRASTRUCTURE WORKS FOR NATIONAL DEVELOPMENT UNIT**

Benchmark Consulting Engineers has been entrusted with the role of Engineer and Project Manager for a wide portfolio of infrastructure projects implemented by the National Development Unit (NDU) across Mauritius. These works aim to uplift community infrastructure, enhance accessibility, and improve public safety and living standards—particularly in vulnerable and underserved areas.

**Acting as the Engineer under the Conditions of Contract and as the overall Project Manager, Benchmark is responsible for the end-to-end management and technical oversight of projects including:**

- **Upgrading of community roads and footpaths**
- **Construction of stormwater drainage systems**
- **Retaining walls and embankment stabilization**
- **Provision of street lighting and pedestrian crossings**
- **Development of market stalls, public amenities, and recreational spaces**
- **Improvement of access to schools, health centres, and residential areas**

## INFRASTRUCTURE WORKS FOR NATIONAL DEVELOPMENT UNIT

Benchmark Consulting Engineers plays a pivotal role in ensuring these public infrastructure projects are delivered on time, within budget, and in accordance with technical specifications and community needs. The firm's leadership in planning, coordination, and execution has made it a trusted partner in the Government of Mauritius' local development agenda.

### Our key Responsibilities:

- Project scoping, stakeholder consultations, and feasibility review
- Detailed design and preparation of tender documents
- Management of tendering processes and bid evaluations
- Contract administration under public sector standards
- Programme and cost control, progress reporting, and contractor performance monitoring
- Review and assessment of variations, claims, and payment certificates
- Completion inspections, snagging, and handover management
- As-built documentation and final project close-out

### Software Tools and Platforms Used:

- **AutoCAD Civil 3D** – for road alignment, grading, and civil design
- **EPANET / SWMM** – for stormwater and surface drainage modeling
- **Microsoft Project / Primavera P6** – for scheduling and construction programme monitoring
- **Revit / AutoCAD** – for structural and architectural detailing
- **Prokon / Staad Pro** – for structural design and analysis of retaining structures
- **Microsoft Excel (Advanced)** – for BOQ generation, cost tracking, and variation assessments
- **GIS Tools (QGIS/ArcGIS)** – for mapping infrastructure layouts and spatial analysis
- **Survey software** – for processing topographic data and setting-out plans

## TRANSPORTATION



Metro Express LTD –  
Rose Hill & Réduit

### Description:

Benchmark carried out building condition surveys along the Metro Express corridor in Rose-Hill and Réduit. The scope included crack assessments using gauges, identification of structural defects, and supervision of remedial works and demolitions to ensure safety and structural stability.

### Main Deliverables:

- Assist Client for Feasibility Study
- Structural Surveys



Metro Express LTD –  
Curepipe

### Description:

In Curepipe, Benchmark assessed residential and commercial buildings along the Metro route, documented structural issues, recommended repairs, and supervised necessary remedial and demolition works.

### Main Deliverables:

- Assist Client for Feasibility Study
- Structural Surveys

## BRIDGES

### Upgrading of bridge at Madame Lolo – Rose Belle

The project involves the construction of a new 65 m long steel truss pedestrian bridge with an upper concrete walkway for pedestrians and motorcycles, and a lower deck with expanded metal panels. Works include installation of lighting poles, water pipelines, electrical services, grotto reconstruction, road access reinstatement, and demolition of the existing bridge.

#### Main Deliverables:

- Topographic and Site Survey
- Structural Assessment Report
- Preliminary and Detailed Engineering Designs
- Construction Drawings
- Bill of Quantities (BoQ) and Cost Estimates
- Site Supervision and Monitoring



## RETAINING STRUCTURES

### Retaining wall at Bernica

Commissioned by the National Development Unit (NDU), the Glen Park project involved the design and construction supervision of a masonry retaining wall, platform, access ramp, and parking area. Benchmark Consulting Engineers provided full engineering and project management services to improve site accessibility and stability.

#### Main Deliverables:

- Design of retaining wall, ramp, platform, and parking area
- Preparation of drawings, specifications, and cost estimates
- Project planning and coordination
- Construction supervision and quality control
- Final reporting and handover documentation



## DETENTION BASINS TO CONTROL WATER FLOW



Retention pond -  
Plaine Magnien

### Description:

Design and construction of a stormwater retention pond to reduce flooding and regulate runoff in Plaine Magnien. The project includes excavation, inlet/outlet structures, overflow systems, and embankment protection.

### Main Deliverables:

- Site survey and hydrological analysis
- Engineering design and layout plans
- BoQ and cost estimates
- Specifications and tender documents
- Construction supervision



Retention pond -  
Mare Tabac

### Description:

Construction of a retention pond at Mare Tabac, aiming to manage stormwater, reduce erosion, and prevent localised flooding. Works include earthworks, grading, and swale lining where required.

### Main Deliverables:

- Topographical Survey & Site Assessment
- Hydrological & Hydraulic Analysis
- Swale Design & Engineering Drawings
- Bill of Quantities (BoQ) & Cost Estimates
- Construction Supervision & Quality Control

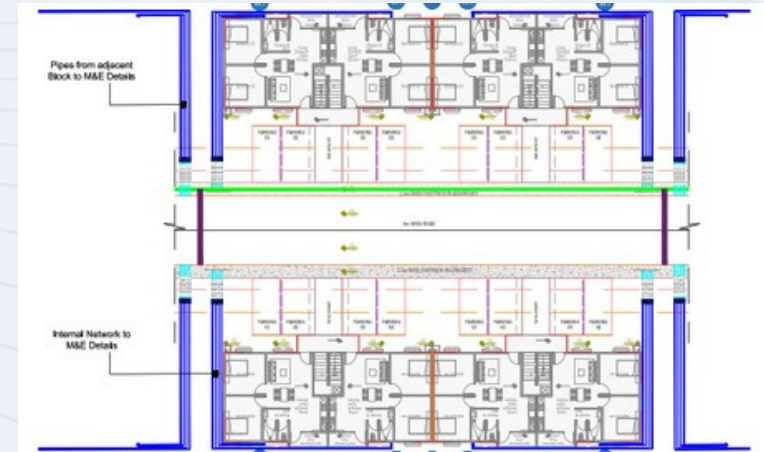
# WATER RETICULATION

## NSLD – Riche terre, pointe aux piments & Notre Dame

As part of the NSLD housing development comprising 800 residential units across three sites, Benchmark Consulting Engineers was responsible for the design, modelling, and supervision of cold water reticulation systems. The scope included the development of internal water supply networks using WaterCAD hydraulic modelling to optimise system performance and ensure adequate pressure and flow to each unit. The works aimed to deliver a reliable and efficient potable water supply tailored to the unique topography and layout of each site.

### Main Deliverables:

- WaterCAD Modelling
- Hydraulic Network Design
- Design of Storage and Distribution
- Components
- Engineering Drawings
- Construction Supervision & Quality Assurance
- Supervision of Testing and Commissioning



## INTERNAL WATER RETICULATION NETWORK

### NSLD – Riche terre, pointe aux piments & Notre Dame

Benchmark Consulting Engineers Ltd designed and supervised the internal water reticulation systems for three NSLD residential developments—Pointe aux Piments, Riche Terre, and Riche Terre 2—each serving 820 residents across 200 housing units and a community centre. The systems are supplied via new CWA boreholes and designed for a total daily water demand of 200 m<sup>3</sup>, including domestic, irrigation, and firefighting use. The networks use HDPE pipes ranging from DN63 mm to DN110 mm, with a DN200 mm main connection, and cover lengths of approximately 822 to 1,013 meters per site. Hydraulic modelling under various flow scenarios confirmed that each system maintains pressures above the 1.5 bar minimum requirement. Valves and access points are provided for maintenance, ensuring efficient operation across all three developments.



## SEWAGE NETWORK

### NSLD - L'Esperance Trebuche & La Clemence

Benchmark Ltd was responsible for the execution of sewage network and associated piping works under the NSLD (National Social Living Development) projects at L'Espérance Trébuchet and La Clémence. The scope of works included the supply, installation, testing, and commissioning of underground gravity sewer systems, manholes, house connections, and all related infrastructure to ensure proper wastewater conveyance and disposal. These systems were designed and constructed to meet national sanitation standards and support the long-term needs of the newly developed residential communities. The project aimed to provide reliable and hygienic sewerage solutions in support of improved public health and environmental sustainability.

#### L'Esperance Trebuchet:

- Installation of 845 meters of uPVC and HDPE sewer pipes ranging from 110mm to 250mm diameter
- Construction of 37 precast concrete sewer manholes
- Installation of 13 prefabricated septic tanks for household wastewater treatment
- Complete sewer reticulation system
- Connection of house outlets to the main sewer network
- Hydraulic testing and commissioning of the network
- Execution in compliance with local sewerage standards and design specifications

#### La Clemence:

- Installation of 625 meters of uPVC and HDPE sewer pipes with diameters ranging from 110mm to 250mm
- Construction of 4 absorption pits, each measuring 12m x 12m, for subsurface effluent disposal
- Installation of 8 prefabricated septic tanks for wastewater treatment
- Trenching, pipe laying, bedding, backfilling, and surface reinstatement
- Connection of domestic sewer lines to the main network
- Testing, inspection, and commissioning of the entire system

## COASTAL PROTECTION

### Beach management plan at poste la Fayette and Le Bouchon

Benchmark Consulting Engineers is supporting the Beach Authority in preparing Beach Management Plans for Poste La Fayette and Le Bouchon public beaches. The scope includes coastal site assessments, stakeholder consultations, and the development of sustainable strategies to address erosion, improve public facilities, and promote environmentally responsible beach use.

#### Main Deliverables:

- Baseline Assessment Report
- Final Beach Management Plan
- Conceptual Layouts and Illustrations
- Monitoring & Maintenance Framework
- Cost Estimates & Implementation Plan



## ROCK REVETMENT



Bel Ombre

### Description:

The Rock Revetment Project at Bel Ombre involves building a coastal protection structure to prevent erosion and protect nearby infrastructure and ecosystems. It includes designing and installing a durable revetment to stabilise vulnerable shoreline areas and enhance coastal resilience.

### Main Deliverables:

- Topographic and Bathymetric Surveys
- Design and Engineering Plans
- Environmental Management Plan (EMP)
- Supervision of works



St - Martin

### Description:

The project involved the design and construction of a rock revetment along critical sections of the St Martin River bank to mitigate erosion, enhance flood protection, and stabilise the riverbanks. This intervention was necessary to protect nearby infrastructure, agricultural lands, and habitats from further degradation caused by water flow and seasonal flooding.

### Main Deliverables:

- Topographic and Bathymetric Surveys
- Design and Engineering Plans
- Environmental Management Plan (EMP)
- Supervision of works

## MORCELLEMENT



### Description:

Benchmark served as Project Manager and Project Engineer for the residential morcellement, overseeing infrastructure design, regulatory compliance, and construction supervision to deliver a well-planned and serviced development.

### Main Deliverables:

- Masterplan Development
- Infrastructure Design
- Tender Documentation
- Construction Supervision
- Project Management



### Description:

Benchmark acted as Project Manager and Project Engineer for the Morcellement at Beau Vallon, overseeing the full development process. The project involved the planning and servicing of residential plots

### Main Deliverables:

- Masterplan and Plot Layout Design
- Design of Infrastructure
- Regulatory Submissions and Approvals
- Preparation of Tender Documents
- Construction Supervision and Quality Control
- Project Management

## EARTHWORK & PLATFORMING



Green Technopark  
Technopole

### Description:

Benchmark Consulting carried out earthworks on a 12,700 m<sup>2</sup> portion of a 5.67-acre plot. The works included cut and fill, and excavation to formation level, as per the Engineer's drawings.

### Main Deliverables:

- Cut and fill operations
- Excavation to formation level
- Stockpiling of topsoil and excavated material in designated areas
- Site coordination and compliance with technical specifications



NSLD - Verdun

### Description:

Benchmark Consulting executed earthworks for the NSLD Project at Verdun, including preparation of paved areas and parking zones. The works involved removal of unsuitable materials, ground improvement, and compaction to specified density levels based on geotechnical recommendations.

### Main Deliverables:

- Removal of topsoil and unsuitable material
- Replacement with compacted rockfill and granular infill
- Embankment and subgrade formation
- Compaction and backfilling in layers
- Soil quality testing

## RECONDITIONING & REHABILITATION SURVEYS



Condition Survey & Remedial works at Open University of Mauritius

### Description:

Benchmark conducted a comprehensive assessment of the building's structural, electrical, plumbing, and drainage systems; identified causes of cracks and water leakages; and implemented structural remediation measures.

### Main Deliverables:

- Project management
- Preparation of reports and cost estimates
- Condition and structural surveys to assess the building's structural integrity
- Perform a physical visual assessment of the building and other structures for cracks/ defects.
- Supervision of remedial works



Proposed extension at Mahatma Gandhi Institute

### Description:

We performed structural assessment and remediation of existing buildings, proposed and designed extensions, assessed existing amenities, provided solutions for building services (electrical, water, sewage, fire-fighting, rooftop), and managed demolition of RCC structures using appropriate equipment.

### Main Deliverables:

- Project Management
- Civil/Structural Design
- Preparation of detailed drawings and cost estimates.
- Conducting condition and structural surveys
- Supervision of remedial works

# STRUCTURES

## PROPERTY DEVELOPMENT



### Description:

Benchmark provided structural design and project management services for a project development in Black River. The project involved the design of structural elements tailored to the coastal and geological conditions of the site.

### Main Deliverables:

- Structural design drawings
- Construction detailing



**Description:** Benchmark was engaged for a large-scale infrastructure project in Jinfei, including civil/structural design and hydrological modelling to support planning and permitting.

### Main Deliverables:

- Civil/Structural Design
- Hydrological Model and Analysis
- BLUP application
- Project Management
- Preparation of Tender Documents

## PROPERTY DEVELOPMENT



AKASHA - Tamarin

### Description:

Situated in the region of Tamarin, Mauritius Akasha is a prestigious project of 110 villas overlooking the Tamarin Bay

### Main Deliverables:

- Structural Design
- Value Engineering



ARACEAE LODGES -  
Nouvelle France

**Description:** Araceae Lodges is situated in the center of Mauritius at Nouvelle France with 25 villas with an expansive view on the South.

### Main Deliverables:

- Structural/Civil Engineer
- Project Management

## PROPERTY DEVELOPMENT



### Description:

This project involved the construction of Beachfront Apartments (Ground + 2) with implementation of innovative Koto Construction at Trou aux Biches.

### Main Deliverables:

- Project management
- MEP Coordination
- Structural Design + Drawings
- BLUP Application
- Supervision



### Description:

River Edge Apartment is a residential Development of an apartment block consisting of 6 apartments and a gym room at Route Du Jardin, Curepipe.

### Main Deliverables:

- Structural/Civil Engineer
- Project Management

## SOCIAL HOUSING UNITS

### NSLD - New Social Living Development

Benchmark Consulting Engineers served as the lead consultant for the NSLD housing project at Riche Terre, Notre Dame and Pointe aux Piments delivering around 600 residential units as part of a national housing programme. Our role spanned full consultancy services including design, infrastructure planning, and construction supervision. The development included housing blocks, access roads, drainage, utilities, and all associated civil works.

- Riche Terre: 200 Housing Units
- Notre Dame: 200 Housing Units
- Pointe aux Piments: 200 Housing Units

#### Main Deliverables:

- Design of housing units
- Design of infrastructures
- Project management
- Utility networks
- Tender documentation
- Contractor coordination
- Site supervision
- Final as-built drawings



## EDUCATIONAL

### MITD Building – Beau Vallon

The project comprises the construction of a new Training Centre for the Mauritius Institute for Training and Development (MITD) at Beau Vallon. The development includes seven blocks (Blocks A to G), with a total built-up area of approximately 7,383 m<sup>2</sup>. The facility will house a range of educational and support spaces, including technical workshops, modern classrooms, an IT laboratory, administrative offices, a canteen, a training restaurant, and various ancillary facilities. The centre is designed to support vocational and technical education, offering a fully equipped environment for practical and theoretical learning.

#### Main Deliverables:

- Structural/Civil Engineer
- Project Management



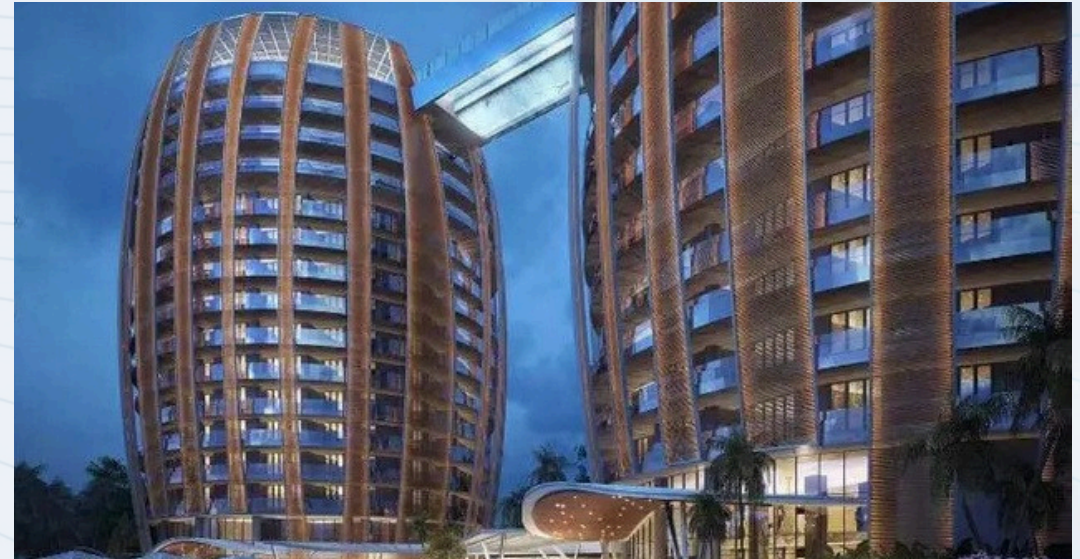
## HOSPITALITY

### Jinfei - Maritim 5-Star Apartment Hotel

The Jinfei Hotel Project, officially known as the Maritim Lambert Hotel, is a landmark luxury development forming part of the Jinfei Smart City initiative. This mixed-use complex includes a 5-star hotel and serviced apartments housed in twin towers connected by a dramatic elevated sky bridge. The project was conceived to attract international tourism, particularly from the Chinese market, and features high-end hospitality amenities including a rooftop pool, spa, retail areas, and executive business suites.

#### Main Deliverables:

- Preparation of Tender Documents
- Concept Design



## HOSPITALITY



### Description:

Noom Hotel Conakry is a modern business hotel in Guinea, featuring guest rooms, conference facilities, dining areas, and recreational amenities. Designed to international standards, it caters to both corporate and leisure travellers.

### Main Deliverables:

- Structural design



### Description:

The Stella Resort Project involves the construction of tree houses, room blocks, and villas on a 105,522 sqm site near Îlot Fortier.

### Main Deliverables:

- Structural design of Apartment Blocks
- Geotechnical Investigation
- Design of Infrastructure Facilities

## INDUSTRIAL



**Construction of Warehouse for Karlyn Properties Ltd**

### Description:

Benchmark provided full consultancy services for the design and supervision of a warehouse for Karlyn Properties, including structural works, infrastructure, and utilities to support storage and logistics operations.

### Main Deliverables:

- Civil/Structural Design
- BLUP application
- Project Management
- Preparation of Tender Documents



**Les Moulin de la Cite – Jinfei**

### Description:

Les Moulins de La Cité Ltée has set up a modern flour milling factory in the Mauritius JinFei Zone on a 10.7-hectare site. Aimed mainly at export, the factory will produce 60,000 MT of flour in its first year. It includes 33,600 m<sup>2</sup> of advanced cold and dry warehouse facilities.

### Main Deliverables:

- Structural/Civil Engineer
- Project Management

## INDUSTRIAL

- **Similec LTD Showroom**

**Client:** Similec LTD

**Location:** Pailles

**Year:** 2025

- **Proposed Construction of an Integrated Customs Services Complex**

**Client:** Mauritius Revenue Authority

**Location:** Mer Rouge, Port-Louis

**Year:** 2024

- **Construction Of Wastepaper Factory**

**Client:** Wecycle LTD

**Location:** Jin - Fei

**Year:** 2021

- **Construction Warehouse Ex-Flour shed**

**Client:**BPML Freeport ServicesLtd

**Location:** Mer Rouge, Port - Louis

**Year:** 2016

- **Construction of warehouse and garage**

**Client:** Immosphere Ltee

**Location :** Pailles

**Year:** 2016

- **Construction of warehouse**

**Client:** Quality Decor

**Location:** La Laura

**Year:** 2021



## COMMERCIAL BUILDINGS

### Eden Village Cultural Centre

The Eden Village Cultural Centre at Jinfei is a dedicated facility developed to promote cultural exchange, social engagement, and community development within the broader Eden Garden precinct. The project features multi-purpose halls, exhibition and event spaces, landscaped outdoor areas, and supporting infrastructure. Benchmark Ltd was appointed as the lead consultant for the full architectural and engineering design as well as construction supervision. The firm ensured that the project met all functional, aesthetic, and regulatory requirements while maintaining high standards of quality and coordination throughout the implementation phase.

#### Main Deliverables:

- Design & Supervision
- Project Management



## COMMERCIAL BUILDINGS



SLOI – Riche Terre

### Description:

This project has been entrusted to Benchmark to offer a Global Consultancy services. The warehouse is located in Riche Terre industrial zone having a floor area of 4,000 Sqm

### Main Deliverables:

- Project Management and Master planning
- Structural assessment of an existing structural members
- Civil/Structural Design
- Supervision and preparation of a cost plan



SANS shop

### Description:

This project consist has a shop integrated in the Factory situated in the South region at Beau Vallon. The floor area is about 1400 Sqm and is a 15m high building.

### Main Deliverables:

- Structural/Civil Engineer
- Project Management

## OFFICE SPACE

### WENSENG International CO Ltd

This project comprised the structural design and detailing for a purpose-built commercial and operational facility for Wenseng International Co. Ltd, a company specialising in stonework, curtain walling, and aluminium/glass systems. Located in Coromandel, the facility integrates industrial spaces—such as fabrication workshops and material storage—with administrative offices and a showroom. While the architectural design highlights the company’s core products through curtain wall glazing, granite cladding, and aluminium panels, our role was focused solely on the structural engineering aspect, ensuring the building’s integrity and functionality to support the integrated operations under one roof.

#### Main Deliverables:

- Complete architectural, structural, and MEP design packages
- BLUP Application



# SUSTAINABLE PROJECTS



## Photovoltaic & Energy Storage Farm

### STOR'SUN

Benchmark Consulting Engineers Ltd is providing civil and structural engineering services for Storsun Ltd's renewable energy initiative in Mauritius. The project comprises four solar plants: two in Trou d'Eau Douce (SS1 and SS2), one in BalACLava (SS3), and one in Petite-Rivière (SS4). Collectively, these facilities will feature approximately 30,000 photovoltaic panels, inverters, transformers (37 MVA), and a 43 MWh Battery Energy Storage System (BESS). Spanning a total area of approximately 290,711 m<sup>2</sup>, the plants are designed to enhance grid stability and contribute to Mauritius's goal of achieving 60% renewable energy in its electricity mix by 2030.



Capacity: 50.002 MWp



Capacity: 16.668 MWp



Capacity: 16.668 MWp



Capacity: 16.668 MWp

### Main Deliverables:

- Structural design and preparation of drawings
- Details for the foundations of Switching Station (STS), Battery Energy Storage System (BESS) yard and Operations & Maintenance (O&M) Station
- Design of access roads Civil works design of
- on-site Design of access roads and Drainage
- systems for the proposed superstructures
- Geotechnical Investigation to validate various design aspects.

## Photovoltaic & Energy Storage Farm

### GREEN YELLOW LTD

Benchmark Consulting Engineers Ltd collaborated with GreenYellow Ltd on the Arsenal Solar Farm project in Mauritius. This 13.86 MWp photovoltaic facility, located in the Pamplemousses district, spans 15 hectares and commenced construction in 2023, entering commercial operation in February 2024. The project includes five transformers, a switchgear room, and a control room, designed to generate approximately 20 GWh of clean energy annually, sufficient to power around 4,500 households.



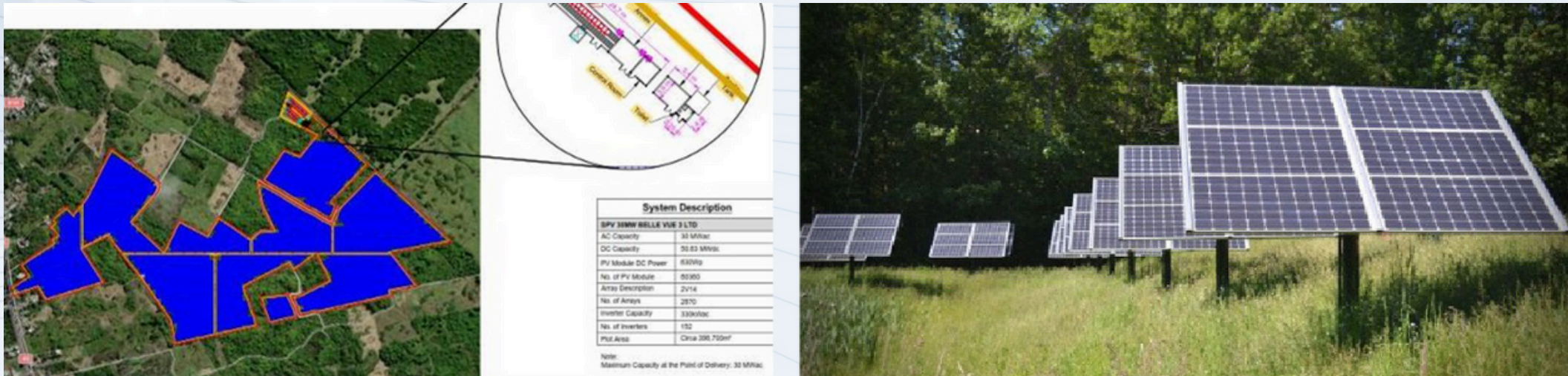
#### Main Deliverables:

- Structural design and preparation of drawings
- Details for the foundations of Switching Station (STS), Battery Energy Storage System (BESS) yard and Operations & Maintenance (O&M) Station Design of
- access roads Civil works design of on-site
- drainage systems for the proposed superstructures Processing of Finding from
- geotechnical investigations to validate various design aspects.

## Photovoltaic & Energy Storage Farm

### SPV 30 MW BELLE VUE 3 LTD

Benchmark Consulting Engineers Ltd served as the civil engineering consultant for the proposed 30 MW AC photovoltaic (PV) farm at Mare d’Australia, Flacq, Mauritius. The project entails the installation of 80,360 PV panels and 152 inverters across a 396,700 m<sup>2</sup> site, along with the construction of essential infrastructure, including a switchgear room, control room, storage room, and toilets. Benchmark's role encompassed providing civil engineering expertise, ensuring compliance with relevant codes and specifications, and overseeing the quality assurance and quality control processes throughout the project's development



#### Main Deliverables:

- Generated flow paths on the site using ArcMAP.
- Analysed the effect of the development on the site's drainage pattern.
- Proposed drainage systems
- Processed Findings from the Geotechnical investigation to validate various design aspects.

## Photovoltaic & Energy Storage Farm

We carried out a detailed site analysis using ArcMAP to assess existing flow paths and the impact of the proposed development on drainage for the listed projects. Based on this, we designed soakaways and French drains in line with LDA recommendations for key structures. Geotechnical findings were also integrated to validate and support the overall design

- Agri-Photovoltaic Farm of 2 MWAC

**Client:** Axian Energy Green

**Location:** Fond du Sac

**Year:** 2024

- Proposed Photovoltaic Farm of 30 MWAC

**Client:** SPV 30 MW Belle Vue 2 Ltd

**Location:** Amaury, Riviere du Rempart

**Year:** 2024

- Proposed Photovoltaic Farm of 1211 kW

**Client:** Green Solar Solutions 2 Ltd

**Location:** Queen Victoria

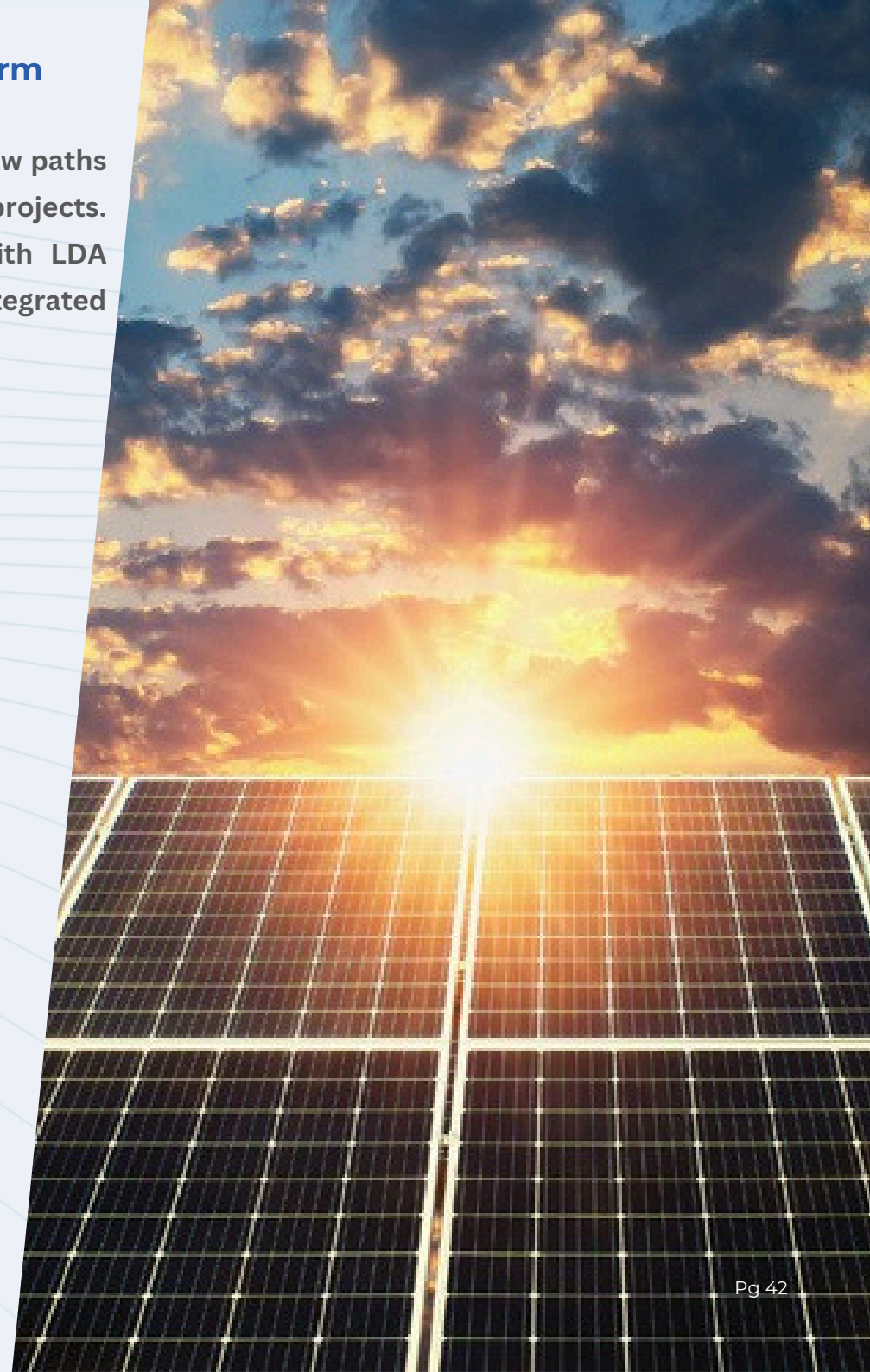
**Year:** 2024

- Land Drainage Assessment for Omnicane

**Client:** Omnicane Ltd

**Location:** Saint Antoine

**Year:** 2024



## PAPER RECYCLING FACTORY

### ZONE ELEVEN LTD

Benchmark Consulting Engineers Ltd provided design and construction supervision services for WeCycle Ltd's wastepaper recycling facility in Jin Fei, Mauritius. This project involved the development of a 4,200 m<sup>2</sup> warehouse and associated infrastructure, including a technical room and gate post. WeCycle specializes in transforming paper and cardboard waste into valuable products such as kraft paper and egg cartons, contributing to the circular economy and reducing landfill waste. The Jin Fei facility is part of WeCycle's expansion to enhance local recycling capabilities and support sustainable waste management practices in Mauritius.



#### Main Deliverables:

- Design for all structural components for the warehouse
- Preparation of detailed construction drawings, specifications, and bill of quantities (BOQ)

BENCHMARK | COMPANY PROFILE

#### Main Deliverables:

- Design of access roads, parking, and circulation areas within the site.
- Supervision of construction
- Assistance with BLUP application.
- Geotechnical assessment and foundation design based on soil conditions

# TELECOMMUNICATIONS

## TELECOMMUNICATIONS

Benchmark is one of the leading firms in telecommunication tower design in Mauritius, with over 300 towers delivered for operators including MTML, Mauritius Telecom, and Emtel. Our scope of work includes steel structural surveys, electromagnetic testing, cost estimation, documentation and contractor coordination, site supervision, and reporting.



### Description:

Benchmark Consulting Engineers provides engineering consultancy services for the replacement and upgrade of telecommunication towers for Mauritius Telecom, Emtel and MTML. The scope includes structural assessment of existing towers, design verification, and supervision of dismantling and installation works. Our role ensures that all new structures meet safety standards and performance requirements for modern telecom infrastructure.

### Main Deliverables:

- Civil/Structural Design
- BLUP application
- Project Management
- Supervision of works
- Assist in torque tests
- Assist in welding tests
- Preparation of tender documents

## TELECOMMUNICATIONS



### Description:

KSAT Project was implemented by PES Engineering for Mauritius Telecom. The project was done on a turnkey basis where Benchmark was the Structural/Civil Engineer.

### Main Deliverables:

- Design of R.C walls
- Steel structure
- Design of access road



### Description:

Emtel Ltd has appointed Benchmark Consulting Engineers Ltd for the Backbone Extension project from Palma to Baie Jacotet.

### Main Deliverables:

- Project management
- Supervision

## TEAM BUILDING

We foster a collaborative and inclusive work culture where every team member feels valued and empowered. Through regular training, team-building activities, and open communication, we strengthen trust, enhance cooperation, and build a shared sense of purpose, driving both individual growth and collective success.





**CONTACT US  
ADDRESS**

**Cnr Ave Des Glaïeuls and Ave Trianon No 2  
Sodnac, Quatre Bornes, Mauritius**

# **BENCHMARK**

---

CONSULTING ENGINEERS

**TEL | FAX**

**+(230) 465 9005**

**MAIL: [sec@benchmarkce.com](mailto:sec@benchmarkce.com)**